

ACI Racing Weekend Misano, 5-6 Giugno 2021

Campionato Italiano GT Sprint - Classifica Prove Libere 1

Misano Circuit Sic 58 4.226 m

1 / 2

	Conducente 1 Num. Concorrente	Conducente 2 Team	Auto	Classe	Tempo	Dist.	Media	Giri
1	8 FUOCO Antonio (ITA) AF CORSE	HUDSPETH Sean (SGP) AF Corse	FERRARI 488 EVO	GT3PA	1'33.356		162,963	23
2	12 FERRARI Lorenzo (ITA) AUDI SPORT ITALIA	AGOSTINI Riccardo (ITA) Audi Sport Italia	AUDI R8 LMS	GT3PR	1'33.402	0.046	162,883	21
3	14 MANCINELLI Daniel (ITA) AUDI SPORT ITALIA	POSTIGLIONE Vito (ITA) Audi Sport Italia	AUDI R8 LMS	GT3PR	1'33.412	0.056	162,866	22
4	25 DI AMATO Daniele (ITA) RS RACING	RS Racing	FERRARI 488 GT3	GT3PR	1'33.436	0.080	162,824	18
5	63 GHIOTTO Luca (ITA) IMPERIALE RACING	FRASSINETI Alex (ITA) Imperiale Racing	LAMBORGHINI HURACÁN	GT3PR	1'33.568	0.212	162,594	24
6	33 CUHADAROGU Murat (TUR) KESSEL RACING	FUMANELLI David (ITA) Kessel Racing	FERRARI 488 EVO	GT3AM	1'33.960	0.604	161,916	21
7	11 EARLE Steve (USA) KESSEL RACING	SCHIRÒ Niccolò (ITA) Kessel Racing	FERRARI 488 EVO	GT3AM	1'34.036	0.680	161,785	21
8	58 LIPPI Alberto (ITA) RAM AUTORACING	FILIPPI Luca (ITA) RAM Autoracing	FERRARI 488 EVO	GT3PA	1'34.044	0.688	161,771	23
9	88 PEROLINI Pietro (ITA) LP RACING	CECOTTO Jonathan (VEN) LP Racing	LAMBORGHINI HURACÁN EVO	GT3PA	1'34.356	1.000	161,236	21
10	55 GUIDETTI Jacopo (ITA) NOVA RACE	DE LUCA Francesco (ITA) Nova Race	HONDA NSX	GT3PA	1'34.383	1.027	161,190	21
11	7 COMMANDINI Stefano (ITA) CECCATO RACING	ZUG Marius (DEU) Ceccato Racing	BMW M6	GT3PR	1'34.397	1.041	161,166	22
12	21 MANN Simon (FRA) AF CORSE	VILANDER Toni (FIN) AF Corse	FERRARI 488 GTB	GT3PA	1'34.633	1.277	160,764	22
13	90 SEGÙ Luca (ITA) AKM MOTORSPORT	BARUCH Bar (ISR) AKM Motorsport	MERCEDES AMG	GT3PA	1'34.778	1.422	160,518	25
14	3 GRECO Matteo (ITA) EASY RACE	CRESTANI Fabrizio (ITA) Easy Race	FERRARI 488 EVO	GT3PR	1'34.877	1.521	160,351	19
15	19 LLARENA Mateo (GCA) IMPERIALE SPORT CAR SERVICE	MIDDLETON Stuart (GBR) Imperiale Sport Car Service	LAMBORGHINI HURACÁN	GT3PA	1'34.948	1.592	160,231	20
16	51 MANN Peter (USA) AF CORSE	CASÉ Lorenzo (ITA) AF Corse	FERRARI 488 GTB	GT3AM	1'35.042	1.686	160,072	23
17	77 ZANOTTI Erwin (ITA) NOVA RACE	CABEZAS Jorge (ESP) Nova Race	HONDA NSX	GT3AM	1'35.511	2.155	159,286	12
18	351 PAVLOVIC Milos (SRB) BONALDI MOTORSPORT	FISCHBAUM Michael (DEU) Bonaldi Motorsport	LAMBORGHINI HURACÁN	GTC	1'36.428	3.072	157,772	16
19	29 IACONE Simone (ITA) VINCENZO SOSPIRI RACING	TEMPESTA Sascha (ITA) Vincenzo Sospiri Racing	LAMBORGHINI HURACÁN	GT3AM	1'36.951	3.595	156,921	6
20	391 PEGORARO Lorenzo (ITA) BEST LAP	MUGELLI Massimiliano (ITA) Best Lap	LAMBORGHINI HURACÁN ST EVO	GTC	1'37.039	3.683	156,778	23
21	322 BERTON Giovanni (ITA) KRYPTON MOTORSPORT	RIVA Giacomo (ITA) Krypton Motorsport	PORSCHE 991 GT3 CUP	GTC	1'37.387	4.031	156,218	22
22	355 LINOSSI Francesca (ITA) EASY RACE	WEBSTER Daniel (SWE) Easy Race	FERRARI 488 CHALLENGE	GTC	1'37.907	4.551	155,388	22
23	381 CURTI Carlo (ITA) TSUNAMI R.T.	Tsunami Racing	PORSCHE 991 GT3 CUP	GTC	1'38.639	5.283	154,235	20
24	333 DEMARCHI Luca (ITA) SR&R	RISITANO Nicholas (ITA) SR&R	FERRARI 488 CHALLENGE	GTC	1'39.073	5.717	153,559	15
25	318 PITORRI Maurizio (ITA) BEST LAP	SIMONELLI Gianluigi (ITA) Best Lap	FERRARI 488 CHALLENGE	GTC	1'39.339	5.983	153,148	23
26	399 DIONISIO Ermanno (ITA) DIONISIO ERMANNO	BARRI Giacomo (ITA)	LAMBORGHINI HURACÁN	GTC	1'40.285	6.929	151,704	17

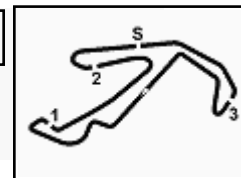
Direttore di Gara : Fabrizio Fondacci

Direttore di Prova : Alessandro Ferrari

04/06/2021 Inizio 11:04 Fine 11:51

Esposta alle:





ACI Racing Weekend Misano, 5-6 Giugno 2021

Campionato Italiano GT Sprint - Classifica Prove Libere 1

Misano Circuit Sic 58 4.226 m

2 / 2

27	377 PRIVITELIO Luciano (ITA) REXAL FFF RACING TEAM	Rexal FFF Racing Team	LAMBORGHINI HURACÁN ST EVO	GTC	1'41.630	8.274	149,696	19
28	207 MAGNONI Luca (ITA) NOVA RACE	DI FABIO Diego (ITA) Nova Race	MERCEDES AMG	GT4AM	1'43.648	10.292	146,781	20
29	251 DI GIUSTO Mattia (ITA) EBIMOTORS	PERA Riccardo (ITA) Ebmotors	PORSCHE CAYMAN 982	GT4PA	1'43.751	10.395	146,636	18
30	215 NERI Nicola (ITA) CECCATO RACING	FASCICOLO Giuseppe (ITA) Ceccato Racing	BMW M4	GT4AM	1'44.052	10.696	146,212	21
31	252 DE CASTRO Sabino (ITA) EBIMOTORS	ARRIGOSI Matteo (ITA) Ebmotors	PORSCHE CAYMAN 982	GT4PA	1'44.333	10.977	145,818	17
32	228 FERRI Fulvio (ITA) NOVA RACE	GARBELLI Enrico (ITA) Nova Race	MERCEDES AMG	GT4PA	1'44.929	11.573	144,989	20
33	275 CERATI Dario (ITA) AUTORLANDO SPORT	GHEZZI Giuseppe (ITA) Autorlando Sport	PORSCHE 718 CAYMAN	GT4AM	1'45.129	11.773	144,714	21
34	223 ROMANI Emanuele (ITA) AUTORLANDO SPORT	CARBONI Gianluca (ITA) Autorlando Sport	PORSCHE 718 CAYMAN	GT4PA	1'45.998	12.642	143,527	20
35	369 LA MAZZA Francesco (ITA) KRYPTON MOTORSPORT	NICOLOSI Giuseppe (ITA) Krypton Motorsport	PORSCHE 991 GT3 CUP	GTC				0

Umidità	56%	ARIA	24°C
Condizioni	DRY	Temp.	42°C

Direttore di Gara : Fabrizio Fondacci

Direttore di Prova : Alessandro Ferrari

04/06/2021 Inizio 11:04 Fine 11:51

Esposta alle:



ACI Global Servizi



Powered by FICr PERUGIA TIMING





ACI Racing Weekend Misano, 5-6 Giugno 2021

Campionato Italiano GT Sprint - Best Sectors & Speed Prove Libere 1

Misano Circuit Sic 58 4.226 m

MIGLIOR GIRO

1	8 AF CORSE	Ferrari 488 Evo	1'33.356
2	12 AUDI SPORT ITALIA	AUDI R8 LMS	1'33.402
3	14 AUDI SPORT ITALIA	AUDI R8 LMS	1'33.412
4	25 RS RACING	Ferrari 488 GT3	1'33.436
5	63 IMPERIALE RACING	Lamborghini Huracán	1'33.568
6	33 KESSEL RACING	Ferrari 488 Evo	1'33.960
7	11 KESSEL RACING	Ferrari 488 Evo	1'34.036
8	58 RAM AUTORACING	Ferrari 488 Evo	1'34.044
9	88 LP RACING	Lamborghini Huracán EVO	1'34.356
10	55 NOVA RACE	Honda NSX	1'34.383
11	7 CECCATO RACING	BMW M6	1'34.397
12	21 AF CORSE	Ferrari 488 GTB	1'34.633
13	90 AKM MOTORSPORT	Mercedes AMG	1'34.778
14	3 EASY RACE	Ferrari 488 Evo	1'34.877
15	19 IMPERIALE SPORT CAR SER	Lamborghini Huracán	1'34.948
16	51 AF CORSE	Ferrari 488 GTB	1'35.042
17	77 NOVA RACE	Honda NSX	1'35.511
18	351 BONALDI MOTORSPORT	Lamborghini Huracán	1'36.428
19	29 VINCENZO SOSPIRI RACING	Lamborghini Huracán	1'36.951
20	391 BEST LAP	Lamborghini Huracán ST Evo	1'37.039
21	322 KRYPTON MOTORSPORT	Porsche 991 GT3 Cup	1'37.387
22	355 EASY RACE	Ferrari 488 Challenge	1'37.907
23	381 TSUNAMI R.T.	Porsche 991 GT3 Cup	1'38.639
24	333 SR&R	Ferrari 488 Challenge	1'39.073
25	318 BEST LAP	Ferrari 488 Challenge	1'39.339
26	399 DIONISIO ERMANNO	Lamborghini Huracán	1'40.285
27	377 REXAL FFF RACING TEAM	Lamborghini Huracán ST Evo	1'41.630
28	207 NOVA RACE	Mercedes AMG	1'43.648
29	251 EBIMOTORS	Porsche Cayman 982	1'43.751
30	215 CECCATO RACING	BMW M4	1'44.052
31	252 EBIMOTORS	Porsche Cayman 982	1'44.333
32	228 NOVA RACE	Mercedes AMG	1'44.929
33	275 AUTORLANDO SPORT	Porsche 718 Cayman	1'45.129
34	223 AUTORLANDO SPORT	Porsche 718 Cayman	1'45.998
35	369 KRYPTON MOTORSPORT	Porsche 991 GT3 Cup	

SPEED

1	3 EASY RACE	Ferrari 488 Evo	226,4
2	318 BEST LAP	Ferrari 488 Challenge	221,8
3	355 EASY RACE	Ferrari 488 Challenge	221,3
4	322 KRYPTON MOTORSPORT	Porsche 991 GT3 Cup	220,9
5	51 AF CORSE	Ferrari 488 GTB	220,9
6	77 NOVA RACE	Honda NSX	220,4
7	391 BEST LAP	Lamborghini Huracán ST Evo	220,0
8	351 BONALDI MOTORSPORT	Lamborghini Huracán	220,0
9	14 AUDI SPORT ITALIA	AUDI R8 LMS	219,5
10	55 NOVA RACE	Honda NSX	219,5
11	90 AKM MOTORSPORT	Mercedes AMG	219,5
12	25 RS RACING	Ferrari 488 GT3	219,1
13	8 AF CORSE	Ferrari 488 Evo	219,1
14	381 TSUNAMI R.T.	Porsche 991 GT3 Cup	219,1
15	399 DIONISIO ERMANNO	Lamborghini Huracán	218,6
16	33 KESSEL RACING	Ferrari 488 Evo	218,6
17	19 IMPERIALE SPORT CAR SER	Lamborghini Huracán	218,2
18	12 AUDI SPORT ITALIA	AUDI R8 LMS	218,2
19	7 CECCATO RACING	BMW M6	217,7
20	21 AF CORSE	Ferrari 488 GTB	217,3
21	11 KESSEL RACING	Ferrari 488 Evo	217,3
22	58 RAM AUTORACING	Ferrari 488 Evo	217,3
23	88 LP RACING	Lamborghini Huracán EVO	217,3
24	63 IMPERIALE RACING	Lamborghini Huracán	216,9
25	377 REXAL FFF RACING TEAM	Lamborghini Huracán ST Evo	216,9
26	333 SR&R	Ferrari 488 Challenge	216,4
27	29 VINCENZO SOSPIRI RACING	Lamborghini Huracán	216,4
28	252 EBIMOTORS	Porsche Cayman 982	201,5
29	251 EBIMOTORS	Porsche Cayman 982	201,5
30	215 CECCATO RACING	BMW M4	200,4
31	275 AUTORLANDO SPORT	Porsche 718 Cayman	200,0
32	223 AUTORLANDO SPORT	Porsche 718 Cayman	198,9
33	228 NOVA RACE	Mercedes AMG	197,8
34	207 NOVA RACE	Mercedes AMG	196,0
35	369 KRYPTON MOTORSPORT	Porsche 991 GT3 Cup	180,9

SEG. 1

1	14 AUDI SPORT ITALIA	24.312
2	12 AUDI SPORT ITALIA	24.313
3	8 AF CORSE	24.362
4	63 IMPERIALE RACING	24.435
5	25 RS RACING	24.476
6	11 KESSEL RACING	24.494
7	3 EASY RACE	24.573
8	7 CECCATO RACING	24.648
9	55 NOVA RACE	24.656
10	58 RAM AUTORACING	24.656
11	33 KESSEL RACING	24.658
12	90 AKM MOTORSPORT	24.692
13	21 AF CORSE	24.694
14	51 AF CORSE	24.710
15	77 NOVA RACE	24.720
16	88 LP RACING	24.764
17	19 IMPERIALE SPORT CA	24.789
18	29 VINCENZO SOSPIRI RA	24.892
19	351 BONALDI MOTORSPOR	25.481
20	322 KRYPTON MOTORSPOR	25.661
21	355 EASY RACE	25.790
22	391 BEST LAP	25.811
23	381 TSUNAMI R.T.	26.041
24	333 SR&R	26.348
25	318 BEST LAP	26.447
26	399 DIONISIO ERMANNO	26.495
27	377 REXAL FFF RACING TE	26.881
28	207 NOVA RACE	27.017
29	251 EBIMOTORS	27.186
30	215 CECCATO RACING	27.344
31	252 EBIMOTORS	27.375
32	275 AUTORLANDO SPORT	27.422
33	228 NOVA RACE	27.498
34	223 AUTORLANDO SPORT	27.519

SEG. 2

1	25 RS RACING	21.956
2	14 AUDI SPORT ITALIA	22.059
3	63 IMPERIALE RACING	22.072
4	8 AF CORSE	22.108
5	3 EASY RACE	22.113
6	33 KESSEL RACING	22.134
7	55 NOVA RACE	22.190
8	90 AKM MOTORSPORT	22.212
9	12 AUDI SPORT ITALIA	22.251
10	58 RAM AUTORACING	22.255
11	11 KESSEL RACING	22.260
12	7 CECCATO RACING	22.288
13	88 LP RACING	22.298
14	19 IMPERIALE SPORT CA	22.379
15	21 AF CORSE	22.395
16	51 AF CORSE	22.420
17	77 NOVA RACE	22.518
18	391 BEST LAP	22.689
19	351 BONALDI MOTORSPOR	22.718
20	29 VINCENZO SOSPIRI RA	22.844
21	322 KRYPTON MOTORSPOR	22.847
22	381 TSUNAMI R.T.	22.964
23	355 EASY RACE	23.085
24	318 BEST LAP	23.155
25	399 DIONISIO ERMANNO	23.230
26	333 SR&R	23.238
27	377 REXAL FFF RACING TE	23.569
28	251 EBIMOTORS	24.311
29	207 NOVA RACE	24.438
30	215 CECCATO RACING	24.491
31	252 EBIMOTORS	24.494
32	228 NOVA RACE	24.572
33	275 AUTORLANDO SPORT	25.011
34	223 AUTORLANDO SPORT	25.174
35	369 KRYPTON MOTORSPOR	31.932

SEG. 3

1	12 AUDI SPORT ITALIA	25.905
2	55 NOVA RACE	25.956
3	3 EASY RACE	25.958
4	25 RS RACING	25.970
5	8 AF CORSE	25.990
6	63 IMPERIALE RACING	26.069
7	14 AUDI SPORT ITALIA	26.077
8	90 AKM MOTORSPORT	26.078
9	58 RAM AUTORACING	26.145
10	7 CECCATO RACING	26.172
11	88 LP RACING	26.178
12	11 KESSEL RACING	26.231
13	19 IMPERIALE SPORT CA	26.261
14	33 KESSEL RACING	26.263
15	51 AF CORSE	26.304
16	21 AF CORSE	26.339
17	77 NOVA RACE	26.365
18	391 BEST LAP	26.711
19	351 BONALDI MOTORSPOR	26.716
20	29 VINCENZO SOSPIRI RA	26.830
21	322 KRYPTON MOTORSPOR	26.933
22	355 EASY RACE	26.950
23	318 BEST LAP	27.196
24	381 TSUNAMI R.T.	27.319
25	333 SR&R	27.333
26	399 DIONISIO ERMANNO	27.466
27	377 REXAL FFF RACING TE	27.935
28	215 CECCATO RACING	28.671
29	207 NOVA RACE	28.706
30	251 EBIMOTORS	28.875
31	252 EBIMOTORS	28.910
32	275 AUTORLANDO SPORT	29.044
33	223 AUTORLANDO SPORT	29.153
34	228 NOVA RACE	29.269
35	369 KRYPTON MOTORSPOR	34.886

SEG. 4

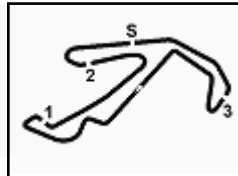
1	12 AUDI SPORT ITALIA	20.605
2	63 IMPERIALE RACING	20.702
3	14 AUDI SPORT ITALIA	20.722
4	25 RS RACING	20.736
5	8 AF CORSE	20.746
6	58 RAM AUTORACING	20.832
7	55 NOVA RACE	20.860
8	11 KESSEL RACING	20.862
9	88 LP RACING	20.876
10	33 KESSEL RACING	20.905
11	7 CECCATO RACING	20.969
12	21 AF CORSE	20.978
13	19 IMPERIALE SPORT CA	20.994
14	3 EASY RACE	21.041
15	51 AF CORSE	21.091
16	77 NOVA RACE	21.119
17	90 AKM MOTORSPORT	21.142
18	351 BONALDI MOTORSPOR	21.499
19	391 BEST LAP	21.623
20	29 VINCENZO SOSPIRI RA	21.643
21	322 KRYPTON MOTORSPOR	21.700
22	355 EASY RACE	21.773
23	333 SR&R	22.034
24	399 DIONISIO ERMANNO	22.125
25	381 TSUNAMI R.T.	22.172
26	318 BEST LAP	22.400
27	377 REXAL FFF RACING TE	22.710
28	207 NOVA RACE	23.030
29	251 EBIMOTORS	23.050
30	215 CECCATO RACING	23.140
31	252 EBIMOTORS	23.191
32	228 NOVA RACE	23.212
33	275 AUTORLANDO SPORT	23.326
34	223 AUTORLANDO SPORT	23.770

04/06/2021



Powered by FICr PERUGIA TIMING





ACI Racing Weekend Misano, 5-6 Giugno 2021

Campionato Italiano GT Sprint - Ideal Time Prove Libere 1

Misano Circuit Sic 58 4.226 m
1 / 2

Num. Concorrente	Auto	Seg. 1 Diff. 1	Seg. 2 Diff. 2	Seg. 3 Diff. 3	Seg. 4 Diff. 4	Ideal Time Miglior Giro	Pos.	Diff.
1 12 AUDI SPORT ITALIA	AUDI R8 LMS	24.313 +0.321	22.251 +0.007	25.905	20.605	1'33.074 1'33.402	2	0.328
2 25 RS RACING	Ferrari 488 GT3	24.476 +0.072	21.956 +0.188	25.970	20.736 +0.038	1'33.138 1'33.436	4	0.298
3 14 AUDI SPORT ITALIA	AUDI R8 LMS	24.312 +0.135	22.059 +0.035	26.077 +0.053	20.722 +0.019	1'33.170 1'33.412	3	0.242
4 8 AF CORSE	Ferrari 488 Evo	24.362 +0.111	22.108	25.990	20.746 +0.039	1'33.206 1'33.356	1	0.150
5 63 IMPERIALE RACING	Lamborghini Huracán	24.435 +0.187	22.072 +0.103	26.069	20.702	1'33.278 1'33.568	5	0.290
6 55 NOVA RACE	Honda NSX	24.656 +0.009	22.190 +0.224	25.956 +0.372	20.860 +0.116	1'33.662 1'34.383	10	0.721
7 3 EASY RACE	Ferrari 488 Evo	24.573 +0.404	22.113 +0.161	25.958 +0.236	21.041 +0.391	1'33.685 1'34.877	14	1.192
8 11 KESSEL RACING	Ferrari 488 Evo	24.494 +0.098	22.260 +0.034	26.231	20.862 +0.057	1'33.847 1'34.036	7	0.189
9 58 RAM AUTORACING	Ferrari 488 Evo	24.656 +0.006	22.255 +0.023	26.145	20.832 +0.127	1'33.888 1'34.044	8	0.156
10 33 KESSEL RACING	Ferrari 488 Evo	24.658	22.134	26.263	20.905	1'33.960 1'33.960	6	
11 7 CECCATO RACING	BMW M6	24.648 +0.260	22.288 +0.037	26.172 +0.023	20.969	1'34.077 1'34.397	11	0.320
12 88 LP RACING	Lamborghini Huracán EVO	24.764 +0.170	22.298 +0.070	26.178	20.876	1'34.116 1'34.356	9	0.240
13 90 AKM MOTORSPORT	Mercedes AMG	24.692 +0.490	22.212 +0.051	26.078 +0.047	21.142 +0.066	1'34.124 1'34.778	13	0.654
14 21 AF CORSE	Ferrari 488 GTB	24.694 +0.071	22.395 +0.143	26.339	20.978 +0.013	1'34.406 1'34.633	12	0.227
15 19 IMPERIALE SPORT CA	Lamborghini Huracán	24.789 +0.381	22.379 +0.144	26.261	20.994	1'34.423 1'34.948	15	0.525
16 51 AF CORSE	Ferrari 488 GTB	24.710 +0.089	22.420	26.304 +0.428	21.091	1'34.525 1'35.042	16	0.517
17 77 NOVA RACE	Honda NSX	24.720 +0.357	22.518	26.365	21.119 +0.432	1'34.722 1'35.511	17	0.789
18 29 VINCENZO SOSPIRI RA	Lamborghini Huracán	24.892 +0.331	22.844 +0.031	26.830 +0.380	21.643	1'36.209 1'36.951	19	0.742
19 351 BONALDI MOTORSPOR	Lamborghini Huracán	25.481 +0.014	22.718	26.716	21.499	1'36.414 1'36.428	18	0.014
20 391 BEST LAP	Lamborghini Huracán ST Evo	25.811 +0.140	22.689 +0.065	26.711	21.623	1'36.834 1'37.039	20	0.205
21 322 KRYPTON MOTORSPOR	Porsche 991 GT3 Cup	25.661	22.847 +0.237	26.933 +0.009	21.700	1'37.141 1'37.387	21	0.246
22 355 EASY RACE	Ferrari 488 Challenge	25.790	23.085 +0.082	26.950 +0.131	21.773 +0.096	1'37.598 1'37.907	22	0.309
23 381 TSUNAMI R.T.	Porsche 991 GT3 Cup	26.041	22.964	27.319	22.172 +0.143	1'38.496 1'38.639	23	0.143
24 333 SR&R	Ferrari 488 Challenge	26.348 +0.045	23.238	27.333	22.034 +0.075	1'38.953 1'39.073	24	0.120
25 318 BEST LAP	Ferrari 488 Challenge	26.447	23.155 +0.002	27.196	22.400 +0.139	1'39.198 1'39.339	25	0.141
26 399 DIONISIO ERMANNO	Lamborghini Huracán	26.495 +0.653	23.230	27.466	22.125 +0.316	1'39.316 1'40.285	26	0.969
27 377 REXAL FFF RACING TE	Lamborghini Huracán ST Evo	26.881 +0.329	23.569 +0.127	27.935 +0.079	22.710	1'41.095 1'41.630	27	0.535
28 207 NOVA RACE	Mercedes AMG	27.017 +0.185	24.438 +0.017	28.706 +0.033	23.030 +0.222	1'43.191 1'43.648	28	0.457
29 251 EBIMOTORS	Porsche Cayman 982	27.186 +0.102	24.311 +0.126	28.875 +0.101	23.050	1'43.422 1'43.751	29	0.329
30 215 CECCATO RACING	BMW M4	27.344 +0.038	24.491 +0.074	28.671 +0.027	23.140 +0.267	1'43.646 1'44.052	30	0.406
31 252 EBIMOTORS	Porsche Cayman 982	27.375 +0.010	24.494 +0.210	28.910	23.191 +0.143	1'43.970 1'44.333	31	0.363
32 228 NOVA RACE	Mercedes AMG	27.498	24.572 +0.010	29.269	23.212 +0.368	1'44.551 1'44.929	32	0.378
33 275 AUTORLANDO SPORT	Porsche 718 Cayman	27.422 +0.186	25.011	29.044 +0.062	23.326 +0.078	1'44.803 1'45.129	33	0.326

04/06/2021

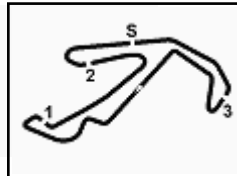


ACI Global Servizi



Powered by FICr PERUGIA TIMING





ACI Racing Weekend Misano, 5-6 Giugno 2021

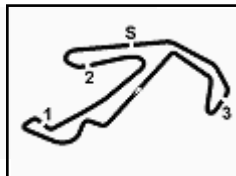
Campionato Italiano GT Sprint - Ideal Time Prove Libere 1

Misano Circuit Sic 58 4.226 m

2 / 2

Num. Concorrente	Auto	Seg. 1 Diff. 1	Seg. 2 Diff. 2	Seg. 3 Diff. 3	Seg. 4 Diff. 4	Ideal Time Miglior Giro	Pos.	Diff.
34 223 AUTORLANDO SPORT	Porsche 718 Cayman	27.519	25.174 +0.169	29.153	23.770 +0.213	1'45.616 1'45.998	34	0.382
369 KRYPTON MOTORSPOR	Porsche 991 GT3 Cup							
Ideal Time Assoluto		24.312	21.956	25.905	20.605	1'32.778		





ACI Racing Weekend Misano, 5-6 Giugno 2021

Campionato Italiano GT Sprint - Analisi Tempi Prove Libere 1

Misano Circuit Sic 58.4.226 m

1 / 7

3 Easy Race (1'34.877)

Giro	Seg.1	Seg.2	Seg.3	Seg.4	T. Giro	km/h	Local Time
1							11:07'08.021
2	46.008	22.789	28.003	2'25.611	4'02.411P	216,9	11:11'10.432
3	40.751	23.072	26.398	21.069	1'51.290P	217,7	11:13'01.722
4	24.977	22.274	26.194	21.432	1'34.877	219,5	11:14'36.599
5	24.647	22.342	28.372	21.307	1'36.668	219,1	11:16'13.267
6	25.980	22.827	28.910	2'04.388	3'22.105P	202,6	11:19'35.372
7	40.198	22.412	26.345	21.268	1'50.223P	218,2	11:21'25.595
8	24.824	22.212	26.882	21.272	1'35.190	218,6	11:23'00.785
9	24.573	22.403	27.092	2'30.888	3'44.956P	219,1	11:26'45.741
10	40.100	22.469	26.288	21.053	1'49.910P	219,5	11:28'35.651
11	24.815	22.608			3'41.638P	220,9	11:32'17.289
12	43.244	22.741	26.365	22.407	1'54.757P	225,0	11:34'12.046
13	25.331	22.187	26.339	21.285	1'35.142	221,3	11:35'47.188
14	25.307	22.113	26.388	21.466	1'35.274	220,9	11:37'22.462
15	25.075	22.515	26.375	2'55.095	4'09.060P	221,3	11:41'31.522
16	40.551	22.631	26.235	21.273	1'50.690P	221,3	11:43'22.212
17	24.915	22.334	26.683	21.442	1'35.374	218,2	11:44'57.586
18	25.333	22.303	26.232	21.041	1'34.909	221,3	11:46'32.495
19	25.060	22.410			1'35.786	221,8	11:48'08.281
20	25.485	22.489	25.958	24.197	1'38.129	226,4	11:49'46.410

7 Ceccato Racing (1'34.397)

Giro	Seg.1	Seg.2	Seg.3	Seg.4	T. Giro	km/h	Local Time
1							11:07'43.059
2	2'23.739	23.849	26.550	21.782	3'35.920P	215,6	11:11'18.979
3	25.817	23.064	26.316	21.270	1'36.467	216,0	11:12'55.446
4	24.908	22.325	26.195	20.969	1'34.397	216,4	11:14'29.843
5	24.776	22.288	26.172	21.709	1'34.945	216,0	11:16'04.788
6	24.648	22.349	26.413	21.180	1'34.590	215,6	11:17'39.378
7	26.741	23.438	27.148	32.142	1'49.469P	217,3	11:19'28.847
8	2'42.643	22.933	26.432	34.892	4'06.900P	214,7	11:23'35.747
9	26.103	23.352	26.484	21.079	1'37.018	214,3	11:25'12.765
10	25.764	22.392	26.250	21.042	1'35.448	215,6	11:26'48.213
11	24.656	22.290	26.315	21.167	1'34.428	216,0	11:28'22.641
12	24.666	22.547	26.197	21.131	1'34.541	216,4	11:29'57.182
13	24.824	22.478	26.316	30.224	1'43.842P	216,0	11:31'41.024
14	2'00.046	23.519	29.257	22.550	3'15.372P	216,0	11:34'56.396
15	25.249	23.435	27.080	21.765	1'37.529	216,0	11:36'33.925
16	25.442	22.579	26.646	21.230	1'35.897	216,4	11:38'09.822
17	25.103	22.469	26.413	21.260	1'35.245	216,9	11:39'45.067
18	25.239	22.820	26.410	21.655	1'36.124	217,7	11:41'21.191
19	25.425	22.443	26.459	30.825	1'45.152P	216,4	11:43'06.343
20	2'13.677	22.659	26.412	21.204	3'23.952P	216,9	11:46'30.295
21	25.272	22.462	26.433	21.611	1'35.778	216,9	11:48'06.073
22	25.604	22.450	26.500	21.372	1'35.926	217,3	11:49'41.999
23	27.070	23.932	27.814	33.402	1'52.218P	214,7	11:51'34.217

8 AF Corse (1'33.356)

Giro	Seg.1	Seg.2	Seg.3	Seg.4	T. Giro	km/h	Local Time
1							11:10'08.360
2	24.874	22.444	26.572	21.241	1'35.131	216,9	11:11'43.491
3	24.836	22.231	26.162	20.873	1'34.102	216,9	11:13'17.593
4	24.593	22.142	26.207	20.841	1'33.783	217,7	11:14'51.376
5	24.562	22.260	26.727	33.169	1'46.718P	219,1	11:16'38.094
6	2'37.989	22.676	26.567	21.218	3'48.450P	216,9	11:20'26.544
7	24.362	22.170	27.201	20.746	1'34.479	217,7	11:22'01.023
8	24.473	22.108	25.990	20.785	1'33.356	217,7	11:23'34.379
9	24.408	22.144	26.857	32.101	1'45.510P	218,2	11:25'19.889
10	2'25.958	24.647	27.078	21.327	3'39.010P	216,4	11:28'58.899
11	25.567	22.769	26.615	22.045	1'36.996	216,0	11:30'35.895
12	25.680	22.806	27.663	21.237	1'37.386	216,0	11:32'13.281

13	25.132	22.571	26.734	23.056	1'37.493	217,3	11:33'50.774
14	25.519	22.448	26.466	21.701	1'36.134	217,7	11:35'26.908
15	24.943	22.404	26.573	21.141	1'35.061	216,4	11:37'01.969
16	25.066	22.716	26.454	20.906	1'35.142	216,4	11:38'37.111
17	24.735	22.227	26.228	21.849	1'35.039	216,9	11:40'12.150
18	24.746	22.389	26.519	21.996	1'35.650	216,9	11:41'47.800
19	26.736	23.002	26.312	20.888	1'36.938	217,3	11:43'24.738
20	24.825	22.383	27.303	22.158	1'36.669	218,2	11:45'01.407
21	24.942	22.422	26.237	20.844	1'34.445	216,9	11:46'35.852
22	24.818	22.331	26.183	21.017	1'34.349	217,7	11:48'10.201
23	25.401	23.140	26.232	21.950	1'36.723	218,2	11:49'46.924
24	28.139	23.061	28.083	38.746	1'58.029P	218,2	11:51'44.953

11 Kessel Racing (1'34.036)

Giro	Seg.1	Seg.2	Seg.3	Seg.4	T. Giro	km/h	Local Time
1							11:05'36.310
2	2'12.105	26.240	31.600	1'50.886	5'00.831P	206,9	11:10'37.141
3	41.365	23.523	27.553	22.948	1'55.389P	215,6	11:12'32.530
4	25.599	22.643	26.453	21.293	1'35.988	216,4	11:14'08.518
5	24.938	22.574	26.421	21.321	1'35.254	216,0	11:15'43.772
6	24.615	22.474	27.121	2'36.747	3'50.957P	217,3	11:19'34.729
7	40.274	22.554	27.401	21.627	1'51.856P	214,3	11:21'26.585
8	26.180	22.390	26.389	21.129	1'36.088	216,4	11:23'02.673
9	24.735	22.287	26.378	21.033	1'34.433	216,4	11:24'37.106
10	24.710	22.260	26.748	2'41.890	3'55.608P	216,4	11:28'32.714
11	44.934	24.241	29.333	23.377	2'01.885P	214,7	11:30'34.599
12	26.635	24.346	28.133	23.001	1'42.115	213,9	11:32'16.714
13	27.224	23.878	27.905	22.604	1'41.611	215,6	11:33'58.325
14	26.507	23.762	28.021	22.054	1'40.344	216,0	11:35'38.669
15	26.561	23.766	27.319	22.182	1'39.828	216,0	11:37'18.497
16	26.382	23.443	27.207	22.043	1'39.075	216,4	11:38'57.572
17	27.733	23.953	29.756	24.790	1'46.232	193,2	11:40'43.804
18	29.627	25.553	28.063	2'11.779	3'35.022P	214,7	11:44'18.826
19	42.476	23.176	26.784	21.177	1'53.613P	214,7	11:46'12.439
20	24.670	22.396	26.402	20.862	1'34.330	216,9	11:47'46.769
21	24.494	22.456	26.339	21.122	1'34.411	216,9	11:49'21.180
22	24.592	22.294	26.231	20.919	1'34.036	216,9	11:50'55.216

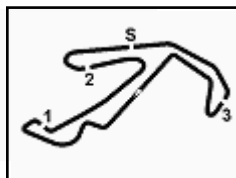
12 Audi Sport Italia (1'33.402)

Giro	Seg.1	Seg.2	Seg.3	Seg.4	T. Giro	km/h	Local Time
1							11:07'17.434
2	41.582	24.090	27.880	22.083	1'55.635P	214,3	11:09'13.069
3	24.740	22.530	26.993	27.226	1'41.489	218,2	11:10'54.558
4	24.494	22.530	27.523	21.117	1'35.664	215,6	11:12'30.222
5	24.634	22.258	25.905	20.605	1'33.402	215,1	11:14'03.624
6	24.417	22.801	26.506	21.199	1'34.923	215,6	11:15'38.547
7	24.313	22.289	26.084	20.925	1'33.611	216,0	11:17'12.158
8	24.472	22.251	26.511	2'18.531	3'31.765P	217,3	11:20'43.923
9	43.191	24.585	29.228	22.991	1'59.995P	165,9	11:22'43.918
10	24.804	22.899	27.754	21.465	1'36.922	212,6	11:24'20.840
11	26.629	22.865	26.558	20.958	1'37.010	214,3	11:25'57.850
12	24.856	22.626	26.228	20.906	1'34.616	214,7	11:27'32.466
13	24.901	22.672	26.165	21.073	1'34.811	215,6	11:29'07.277
14	24.686	22.558	26.047	22.034	1'35.325	216,4	11:30'42.602
15	27.060	23.355	26.306	5'16.470	6'33.191P	214,7	11:37'15.793
16	46.143	23.977	26.382	21.130	1'57.632P	215,1	11:39'13.425
17	24.832	22.784	26.085	23.352	1'37.053	216,0	11:40'50.478
18	24.637	22.978	26.317	20.935	1'34.867	214,7	11:42'25.345
19	24.588	22.374	25.921	20.898	1'33.781	215,6	11:43'59.126
20	24.559	22.389	26.017	20.770	1'33.735	216,4	11:45'32.861
21	24.696	22.440	25.965	21.141	1'34.242	216,4	11:47'07.103
22	25.730	22.821	26.886	21.791	1'37.228	216,0	11:48'44.331

04/06/2021

P = Box In/Out - C = Tempo Invalidato





ACI Racing Weekend Misano, 5-6 Giugno 2021

Campionato Italiano GT Sprint - Analisi Tempi Prove Libere 1

Misano Circuit Sic 58.4.226 m

2 / 7

14 Audi Sport Italia (1'33.412)							
Giro	Seg.1	Seg.2	Seg.3	Seg.4	T. Giro	km/h	Local Time
1							11:07'25.664
2	42.451	24.290	27.747	21.783	1'56.271P	214,7	11:09'21.935
3	24.933	22.649	26.343	21.292	1'35.217	218,2	11:10'57.152
4	24.746	22.591	26.259	21.982	1'35.578	217,7	11:12'32.730
5	24.876	22.059	26.077	20.858	1'33.870	217,7	11:14'06.600
6	24.312	22.426	26.417	20.722	1'33.877	215,6	11:15'40.477
7	24.447	22.094	26.130	20.741	1'33.412	218,2	11:17'13.889
8	24.581	22.706	26.465	2'36.716	3'50.468P	217,7	11:21'04.357
9	42.163	23.210	27.498	21.125	1'53.996P	217,7	11:22'58.353
10	24.603	22.368	26.223	20.917	1'34.111	218,2	11:24'32.464
11	26.184	22.587	28.727	21.464	1'38.962	205,3	11:26'11.426
12	25.288	22.585	27.140	21.384	1'36.397	217,3	11:27'47.823
13	24.519	22.310	26.345	20.857	1'34.031	216,0	11:29'21.854
14	24.941	22.103	26.157	21.185	1'34.386	218,2	11:30'56.240
15	24.626	27.098	30.864	3'08.258	4'30.846P	184,6	11:35'27.086
16	41.681	22.720	28.967	23.761	1'57.129P	217,7	11:37'24.215
17	25.246	22.319	31.901	23.435	1'42.901	177,3	11:39'07.116
18	24.686	22.467	28.553	2'00.832	3'16.538P	208,5	11:42'37.600
19	41.839	22.807	26.413	21.003	1'52.062P	216,0	11:44'15.716
20	24.433	22.202	26.452	20.942	1'34.029	216,0	11:45'49.745
21	24.749	22.163	26.362	21.887	1'35.161	217,3	11:47'24.906
22	24.480	22.135	26.134	20.824	1'33.573	218,6	11:48'58.479
23	24.386	22.122	26.084	21.151	1'33.743	219,5	11:50'32.222

19 Imperiale Sport Car Service (1'34.948)							
Giro	Seg.1	Seg.2	Seg.3	Seg.4	T. Giro	km/h	Local Time
1		24.390	28.370	22.517		213,9	11:07'52.105
2	26.594	22.794	27.237	21.478	1'38.103	216,0	11:09'30.208
3	25.123	22.808	27.171	21.468	1'36.570	213,0	11:11'06.778
4	25.557	24.081	26.755	21.675	1'38.068	215,6	11:12'44.846
5	24.837	22.715	26.922	34.382	1'48.856P	215,1	11:14'33.702
6	4'57.760	23.108	28.781	22.082	6'11.731P	215,1	11:20'45.433
7	24.822	22.483	26.687	21.563	1'35.555	216,0	11:22'20.988
8	25.170	22.523	26.261	20.994	1'34.948	216,9	11:23'55.936
9	25.145	22.508	26.942	21.166	1'35.761	217,3	11:25'31.697
10	24.789	22.379	26.446	35.344	1'48.958P	217,3	11:27'20.655
11	3'11.547	24.116	27.952	22.169	4'25.784P	216,4	11:31'46.439
12	25.744	23.203	26.656	21.584	1'37.187	216,4	11:33'23.626
13	25.407	22.785	27.130	21.790	1'37.112	216,0	11:35'00.738
14	25.387	22.853	26.512	21.388	1'36.140	217,7	11:36'36.878
15	25.985	23.402	28.479	22.772	1'40.638	218,2	11:38'17.516
16	26.824	23.105	27.916	23.172	1'41.017	216,9	11:39'58.533
17	25.254	22.819	27.007	34.846	1'49.926P	217,3	11:41'48.459
18	2'21.415	23.072	26.779	21.540	3'32.806P	216,0	11:45'21.265
19	25.583	22.958	26.742	21.688	1'36.971	216,9	11:46'58.236
20	25.767	23.990	28.851	23.297	1'41.905	216,9	11:48'40.141
21	26.076	23.239	26.802	21.580	1'37.697	217,3	11:50'17.838

21 AF Corse (1'34.633)							
Giro	Seg.1	Seg.2	Seg.3	Seg.4	T. Giro	km/h	Local Time
1		25.776	29.176	54.451		212,6	11:07'45.430
2	1'57.643	23.995	28.241	21.687	3'11.566P	206,1	11:10'56.996
3	25.726	22.826	26.759	25.806	1'41.117	217,3	11:12'38.113
4	24.784	22.457	26.677	22.464	1'36.382	216,4	11:14'14.495
5	25.263	22.481	26.385	21.130	1'35.259	215,6	11:15'49.754
6	25.290	23.611	26.927	22.885	1'38.713	217,3	11:17'28.467
7	24.856	22.405	27.062	22.474	1'36.797	215,6	11:19'05.264
8	24.701	22.421	27.530	22.159	1'36.811	216,0	11:20'42.075
9	25.727	22.701	26.644	22.836	1'37.908	215,1	11:22'19.983
10	24.694	22.413	26.346	21.233	1'34.686	216,0	11:23'54.669
11	24.726	22.395	26.567	20.978	1'34.666	215,1	11:25'29.335

12	26.061	22.856	26.639	34.727	1'50.283P	215,6	11:27'19.618
13	4'26.432	24.753	29.109	22.990	5'43.284P	213,4	11:33'02.902
14	28.076	23.987	26.625	21.931	1'40.619	213,9	11:34'43.521
15	25.359	23.056	26.686	21.726	1'36.827	217,3	11:36'20.348
16	25.454	23.631	26.790	21.478	1'37.353	213,9	11:37'57.701
17	25.099	22.746	26.475	21.470	1'35.790	215,6	11:39'33.491
18	25.743	22.744	27.687	22.952	1'39.126	215,1	11:41'12.617
19	25.361	22.635	26.480	21.677	1'36.153	215,6	11:42'48.770
20	25.370	22.484	26.913	34.913	1'49.680P	215,1	11:44'38.450
21	1'27.597	23.108	26.697	21.328	2'38.730P	213,9	11:47'17.180
22	24.765	22.538	26.339	20.991	1'34.633	216,9	11:48'51.813
23	24.856	22.714	27.838	34.506	1'49.914P	216,0	11:50'41.727

25 RS Racing (1'33.436)							
Giro	Seg.1	Seg.2	Seg.3	Seg.4	T. Giro	km/h	Local Time
1		23.794	26.903	32.212		214,3	11:10'41.535
2	41.958	22.703	26.448	29.374	2'00.483P	216,9	11:12'42.018
3	24.587	22.201	26.110	20.736	1'33.634	217,3	11:14'15.652
4	24.805	22.253	26.448	23.556	1'37.062	219,1	11:15'52.714
5	24.509	22.265	26.621	21.032	1'34.427	216,0	11:17'27.141
6	24.773	22.190	26.066	20.991	1'34.020	216,9	11:19'01.161
7	24.872	22.618	27.106	32.741	1'47.337P	216,0	11:20'48.498
8	5'49.731	22.769	26.656	21.920	7'01.076P	216,9	11:27'49.574
9	24.548	22.144	25.970	20.774	1'33.436	218,6	11:29'23.010
10	24.548	22.013	26.096	21.859	1'34.516	218,2	11:30'57.526
11	24.476	22.660	26.469	23.058	1'36.663	217,7	11:32'34.189
12	24.857	22.248	26.553	21.234	1'34.892	217,3	11:34'09.081
13	24.799	22.118	26.495	32.389	1'45.801P	218,2	11:35'54.882
14	2'59.323	22.465	27.258	24.699	4'13.745P	217,7	11:40'08.627
15	24.993	22.537	27.022	21.914	1'36.466	218,2	11:41'45.093
16	24.827	22.156	26.009	21.426	1'34.418	217,7	11:43'19.511
17	24.643	22.122	26.034	20.768	1'33.567	217,3	11:44'53.078
18	24.603	21.956	26.524	32.211	1'45.294P	217,7	11:46'38.372
19	2'46.552	22.263	26.153	20.970	3'55.938P	216,9	11:50'34.310

29 Vincenzo Sospiri Racing (1'36.951)							
Giro	Seg.1	Seg.2	Seg.3	Seg.4	T. Giro	km/h	Local Time
1							11:07'34.213
2	46.043	24.765	30.570	1'46.669	3'28.047P	210,5	11:11'02.260
3	41.428	24.936	27.228	22.309	1'55.901P	213,9	11:12'58.161
4	25.223	22.875	27.210	21.643	1'36.951	214,7	11:14'35.112
5	24.892	23.237	30.459	25.730	1'44.318	215,1	11:16'19.430
6	28.818	24.034	27.383	21.935	1'42.170	214,3	11:18'01.600
7	25.447	22.844	26.830	22.542	1'37.663	216,4	11:19'39.263

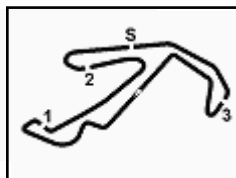
33 Kessel Racing (1'33.960)							
Giro	Seg.1	Seg.2	Seg.3	Seg.4	T. Giro	km/h	Local Time
1		26.099	30.503	24.126		212,6	11:07'32.423
2	27.760	24.445	28.732	27.828	1'48.765P	215,1	11:09'12.188
3	25.156	22.728	26.926	22.602	1'37.412	217,7	11:10'49.600
4	27.450	23.492	27.116	5'50.467	7'08.525P	215,6	11:17'58.125
5	59.765	25.144	29.773	23.547	2'18.229P	211,4	11:20'16.354
6	28.726	25.352	30.952	23.683	1'48.713	210,5	11:22'05.067
7	26.230	23.295	27.343	22.043	1'38.911	215,1	11:23'43.978
8	25.492	23.203	29.413	23.025	1'41.133	210,1	11:25'25.111
9	25.540	23.248	28.641	24.431	1'41.860	213,4	11:27'06.971
10	26.107	22.996	27.081	21.643	1'37.827	216,0	11:28'44.798
11	25.440	24.126	27.187	22.394	1'39.147	216,0	11:30'23.945
12	26.047	23.204	28.768	22.141	1'40.160	213,0	11:32'04.105
13	25.252	24.769	26.792	21.768	1'38.581	216,0	11:33'42.686
14	25.440	23.633	26.945	21.593	1'37.611	216,9	11:35'20.297
15	25.501	22.907	27.594	23.996	1'39.998	214,7	11:37'00.295
16	26.702	27.322	27.839	3'18.770	4'40.633P	213,4	11:41'40.928

04/06/2021

P = Box In/Out - C = Tempo Invalidato



Powered by FICr PERUGIA TIMING



ACI Racing Weekend Misano, 5-6 Giugno 2021

Campionato Italiano GT Sprint - Analisi Tempi Prove Libere 1

Misano Circuit Sic 58 4.226 m

3 / 7

17	44.215	24.008	28.055	22.120	1'58.398P	214,7	11:43'39.326	3	25.692	23.340	26.879	23.035	1'38.946	213,4	11:12'01.854
18	25.173	22.333	26.610	21.172	1'35.288	217,7	11:45'14.614	4	27.231	22.990	26.684	22.497	1'39.402	215,1	11:13'41.256
19	24.967	22.564	27.018	21.588	1'36.137	217,3	11:46'50.751	5	25.194	22.940	26.745	22.037	1'36.916	215,1	11:15'18.172
20	24.708	22.156	26.396	21.286	1'34.546	218,6	11:48'25.297	6	24.932	22.607	26.342	21.267	1'35.148	214,7	11:16'53.320
21	25.095	22.593	27.107	21.186	1'35.981	217,7	11:50'01.278	7	24.924	22.410	26.482	22.891	1'36.707	214,3	11:18'30.027
22	24.658	22.134	26.263	20.905	1'33.960	217,7	11:51'35.238	8	26.460	23.182	28.237	21.384	1'39.263	205,3	11:20'09.290

51 AF Corse (1'35.042)

Giro	Seg.1	Seg.2	Seg.3	Seg.4	T. Giro	km/h	Local Time
1		23.932	28.557	32.183		216,9	11:08'29.854
2	1'45.344	22.977	26.755	26.396	3'01.472P	220,0	11:11'31.326
3	24.943	22.825	26.984	21.267	1'36.019	215,6	11:13'07.345
4	25.162	23.118	26.771	21.318	1'36.369	215,1	11:14'43.714
5	24.710	22.684	26.304	21.758	1'35.456	217,3	11:16'19.170
6	24.799	22.420	26.732	21.091	1'35.042	217,7	11:17'54.212
7	25.670	25.619	29.608	32.861	1'53.758P	201,9	11:19'47.970
8	2'44.927	25.386	29.536	23.068	4'02.917P	217,3	11:23'50.887
9	26.460	24.009	29.020	23.270	1'42.759	217,3	11:25'33.646
10	27.994	23.850	29.319	23.044	1'44.207	211,8	11:27'17.853
11	26.374	23.264	27.977	22.416	1'40.031	217,3	11:28'57.884
12	27.164	23.288	28.590	22.085	1'41.127	217,7	11:30'39.011
13	26.875	1'01.584	29.232	22.459	2'20.150	217,7	11:32'59.161
14	25.680	23.405	27.501	21.920	1'38.506	217,3	11:34'37.667
15	27.712	23.678	28.016	22.168	1'41.574	220,0	11:36'19.241
16	25.752	25.026	29.999	22.441	1'43.218	216,9	11:38'02.459
17	25.616	23.513	27.522	22.526	1'39.177	219,1	11:39'41.636
18	25.917	23.127	27.426	22.092	1'38.562	220,9	11:41'20.198
19	28.314	23.696	27.133	22.035	1'41.178	220,4	11:43'01.376
20	25.542	23.735	28.424	22.188	1'39.889	210,1	11:44'41.265
21	25.627	24.448	27.852	22.060	1'39.987	217,7	11:46'21.252
22	25.545	23.230	27.305	22.038	1'38.118	218,2	11:47'59.370
23	26.273	24.125	27.292	21.745	1'39.435	219,5	11:49'38.805
24	25.553	22.906	27.059	22.006	1'37.524	217,7	11:51'16.329

55 Nova Race (1'34.383)

Giro	Seg.1	Seg.2	Seg.3	Seg.4	T. Giro	km/h	Local Time
1							11:07'22.675
2	46.632	25.544	29.547	23.538	2'05.261P	216,0	11:09'27.936
3	26.860	24.008	26.985	21.642	1'39.495	217,3	11:11'07.431
4	25.411	22.568	26.363	20.978	1'35.320	217,7	11:12'42.751
5	25.033	22.799	26.339	21.038	1'35.209	217,7	11:14'17.960
6	24.970	22.981	27.018	3'34.707	4'49.676P	216,0	11:19'07.636
7	45.874	22.925	26.360	21.015	1'56.174P	216,9	11:21'03.810
8	25.032	22.443	26.922	21.363	1'35.760	218,6	11:22'39.570
9	24.944	22.223	26.862	22.321	1'36.350	217,3	11:24'15.920
10	25.366	22.344	26.257	20.860	1'34.827	216,9	11:25'50.747
11	24.821	22.419	25.956	21.433	1'34.629	217,3	11:27'25.376
12	24.937	22.533	26.220	1'19.060	2'32.750P	219,5	11:29'58.126
13	43.356	23.542	26.870	21.785	1'55.553P	218,2	11:31'53.679
14	25.020	22.500	26.450	21.461	1'35.431	219,1	11:33'29.110
15	25.485	22.706	27.190	21.537	1'36.918	217,7	11:35'06.028
16	25.084	22.504	26.123	21.052	1'34.763	218,6	11:36'40.791
17	25.204	22.604	26.889	1'55.304	3'10.001P	219,1	11:39'50.792
18	42.550	23.414	27.577	25.665	1'59.206P	218,6	11:41'49.998
19	25.075	22.939	26.559	22.379	1'36.952	217,7	11:43'26.950
20	24.656	22.190	26.332	22.572	1'35.750	218,6	11:45'02.700
21	24.980	22.471	26.193	20.948	1'34.592	218,6	11:46'37.292
22	24.665	22.414	26.328	20.976	1'34.383	219,5	11:48'11.675

58 RAM Autoracing (1'34.044)

Giro	Seg.1	Seg.2	Seg.3	Seg.4	T. Giro	km/h	Local Time
1							11:08'13.792
2	52.203	24.636	28.634	23.643	2'09.116P	213,0	11:10'22.908

10	52.252	24.473	26.604	22.423	2'05.752P	214,7	11:26'04.842
11	25.789	22.806	27.857	21.944	1'38.396	213,0	11:27'43.238
12	25.094	22.729	26.325	21.356	1'35.504	215,1	11:29'18.742
13	25.005	22.415	27.370	21.319	1'36.109	216,9	11:30'54.851
14	24.681	1'03.602	27.071	22.247	2'17.601	213,9	11:33'12.452
15	25.171	22.986	26.508	21.486	1'36.151	215,1	11:34'48.603
16	28.843	26.198	30.331	21.945	1'47.317	176,8	11:36'35.920
17	29.351	26.509	30.109	21.662	1'47.631	193,9	11:38'23.551
18	25.096	22.697	28.392	1'18.710	2'34.895P	213,0	11:40'58.446
19	41.093	22.796	28.924	23.463	1'56.276P	216,4	11:42'54.722
20	24.790	22.381	26.551	21.033	1'34.755	217,3	11:44'29.477
21	24.656	22.256	26.496	21.167	1'34.575	215,1	11:46'04.052
22	24.734	22.267	26.336	21.198	1'34.535	215,6	11:47'38.587
23	24.701	22.255	26.501	20.832	1'34.289	215,1	11:49'12.876
24	24.662	22.278	26.145	20.959	1'34.044	216,9	11:50'46.920

63 Imperiale Racing (1'33.568)

Giro	Seg.1	Seg.2	Seg.3	Seg.4	T. Giro	km/h	Local Time
1		23.988	28.224	21.729		212,6	11:06'55.539
2	25.584	23.031	26.742	21.461	1'36.818	214,3	11:08'32.357
3	25.274	23.236	26.810	21.729	1'37.049	215,6	11:10'09.406
4	25.109	22.445	26.330	21.203	1'35.087	216,0	11:11'44.493
5	25.011	22.400	26.352	21.330	1'35.093	216,0	11:13'19.586
6	25.032	22.876	26.398	21.133	1'35.439	216,0	11:14'55.025
7	24.758	22.283	26.466	21.140	1'34.647	216,0	11:16'29.672
8	25.792	23.308	26.508	31.886	1'47.494P	215,6	11:18'17.166
9	2'06.344	22.998	26.468	21.353	3'17.163P	215,6	11:21'34.329
10	24.669	24.003	26.236	21.198	1'36.106	215,1	11:23'10.435
11	24.570	22.289	27.321	21.230	1'35.410	215,6	11:24'45.845
12	24.459	22.225	26.205	20.767	1'33.656	216,0	11:26'19.501
13	24.823	22.811	27.162	30.820	1'45.616P	213,4	11:28'05.117
14	1'53.700	23.158	26.284	20.832	3'03.974P	215,6	11:31'09.091
15	24.770	22.542	26.983	20.817	1'35.112	216,0	11:32'44.203
16	24.493	22.398	26.206	20.727	1'33.824	215,6	11:34'18.027
17	25.552	22.274	28.082	33.224	1'49.132P	216,0	11:36'07.159
18	1'42.881	22.225	26.155	24.761	2'56.022P	216,9	11:39'03.181
19	24.435	22.274	27.302	22.624	1'36.635	215,6	11:40'39.816
20	24.731	22.251	26.485	20.905	1'34.372	212,2	11:42'14.188
21	26.742	22.730	29.476	21.703	1'40.651	215,1	11:43'54.839
22	24.622	22.175	26.069	20.702	1'33.568	215,6	11:45'28.407
23	24.675	22.072	26.794	23.755	1'37.296	216,4	11:47'05.703
24	25.997	23.340	28.541	22.038	1'39.916	198,5	11:48'45.619
25	24.687	22.134	27.527	32.291	1'46.639P	215,6	11:50'32.258

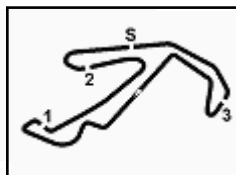
77 Nova Race (1'35.511)

Giro	Seg.1	Seg.2	Seg.3	Seg.4	T. Giro	km/h	Local Time
1		25.877	30.265	23.442		216,4	11:07'59.455
2	26.649	23.558	27.117	21.876	1'39.200	218,6	11:09'38.655
3	25.843	22.829	26.757	22.073	1'37.502	219,1	11:11'16.157
4	25.724	23.034	26.584	22'17.591	23'32.933P	217,7	11:34'49.090
5	48.214	25.341	28.879	1'28.370	3'10.804P	216,4	11:37'59.894
6	44.928	23.233	28.313	29.722	2'06.196P	217,3	11:40'06.090
7	25.011	22.716	26.976	21.708	1'36.411	218,6	11:41'42.501
8	40.231	23.278	27.147	21.226	1'51.882	220,4	11:43'34.383
9	24.955	22.730	26.800	21.215	1'35.700	219,1	11:45'10.083
10	24.861	23.265	26.526	24.239	1'38.891	219,5	11:46'48.974

04/06/2021

P = Box In/Out - C = Tempo Invalidato





ACI Racing Weekend Misano, 5-6 Giugno 2021

Campionato Italiano GT Sprint - Analisi Tempi Prove Libere 1

Misano Circuit Sic 58.4.226 m

4 / 7

11	24.720	22.602	27.221	21.299	1'35.842	220,0	11:48'24.816
12	24.948	22.862	28.102	21.119	1'37.031	216,9	11:50'01.847
13	25.077	22.518	26.365	21.551	1'35.511	220,0	11:51'37.358

4	27.189	24.864	29.347	23.286	1'44.686	195,3	11:13'39.595
5	27.520	24.680	29.124	23.299	1'44.623	196,0	11:15'24.218
6	27.307	24.660	29.491	23.170	1'44.628	195,3	11:17'08.846
7	27.151	24.652	28.939	23.188	1'43.930	195,7	11:18'52.776
8	27.581	26.353	33.546	2'47.508	4'14.988P	192,2	11:23'07.764
9	44.110	25.733	29.744	24.329	2'03.916P	194,6	11:25'11.680
10	27.862	24.674	29.044	23.358	1'44.938	194,6	11:26'56.618
11	27.229	24.640	29.312	23.372	1'44.553	194,6	11:28'41.171
12	28.611	27.217	30.870	23.354	1'50.052	193,9	11:30'31.223
13	27.156	24.508	29.134	23.745	1'44.543	194,9	11:32'15.766
14	27.676	25.256	29.226	23.428	1'45.586	194,6	11:34'01.352
15	27.335	24.657	29.018	23.513	1'44.523	195,3	11:35'45.875
16	27.380	24.438	28.889	23.068	1'43.775	194,6	11:37'29.650
17	27.017	24.764	28.930	23.030	1'43.741	195,7	11:39'13.391
18	27.434	24.454	28.706	23.137	1'43.731	195,7	11:40'57.122
19	27.202	24.455	28.739	23.252	1'43.648	194,9	11:42'40.770
20	27.046	24.546	28.997	23.088	1'43.677	194,6	11:44'24.447
21	27.151	24.761	30.004	35.729	1'57.645P	194,9	11:46'22.092

88 LP Racing (1'34.356)

Giro	Seg.1	Seg.2	Seg.3	Seg.4	T. Giro	km/h	Local Time
1		26.556	29.137	35.658		205,7	11:09'13.092
2	1'13.136	24.439	40.361	32.545	2'50.481P	143,8	11:12'03.573
3	29.886	25.515	36.837	21.339	1'53.577	173,4	11:13'57.150
4	25.145	22.386	26.991	20.937	1'35.459	216,4	11:15'32.609
5	25.113	22.397	26.808	21.644	1'35.962	216,4	11:17'08.571
6	24.934	22.368	26.178	20.876	1'34.356	215,1	11:18'42.927
7	25.095	22.471	26.238	20.927	1'34.731	215,1	11:20'17.658
8	27.898	23.024	26.309	20.910	1'38.141	214,3	11:21'55.799
9	24.764	22.479	26.278	21.059	1'34.580	214,7	11:23'30.379
10	25.016	22.533	26.506	31.099	1'45.154P	215,6	11:25'15.533
11	3'55.352	23.771	27.282	24.946	5'11.351P	216,0	11:30'26.884
12	24.974	22.951	26.476	21.306	1'35.707	216,0	11:32'02.591
13	24.837	22.298	26.238	21.081	1'34.454	215,1	11:33'37.045
14	24.937	22.388	26.238	30.944	1'44.507P	215,6	11:35'21.552
15	1'38.908	23.636	27.623	22.859	2'53.026P	215,6	11:38'14.578
16	26.128	22.948	27.584	23.570	1'40.230	204,2	11:39'54.808
17	25.432	22.716	26.718	21.506	1'36.372	216,0	11:41'31.180
18	25.572	22.860	26.918	32.721	1'48.071P	213,9	11:43'19.251
19	2'02.437	22.762	26.346	21.506	3'13.051P	216,0	11:46'32.302
20	25.747	22.589	26.903	21.603	1'36.842	217,3	11:48'09.144
21	25.318	25.244	26.404	21.622	1'38.588	216,9	11:49'47.732
22	31.389	23.264	27.742	21.969	1'44.364	216,0	11:51'32.096

90 AKM Motorsport (1'34.778)

Giro	Seg.1	Seg.2	Seg.3	Seg.4	T. Giro	km/h	Local Time
1		24.965	28.654	21.713		215,1	11:08'20.162
2	25.224	22.761	26.648	21.812	1'36.445	216,4	11:09'56.607
3	24.692	22.899	26.360	21.285	1'35.236	216,0	11:11'31.843
4	24.976	22.515	27.273	23.542	1'38.306	218,6	11:13'10.149
5	24.885	22.455	26.614	21.517	1'35.471	217,7	11:14'45.620
6	24.872	22.663	26.303	21.230	1'35.068	218,2	11:16'20.688
7	25.182	22.263	26.125	21.208	1'34.778	218,2	11:17'55.466
8	24.832	22.978	26.243	21.184	1'35.237	216,4	11:19'30.703
9	25.084	22.474	26.303	21.155	1'35.016	216,9	11:21'05.719
10	24.877	22.430	26.078	22.423	1'35.808	217,7	11:22'41.527
11	25.533	23.076	26.251	2'44.317	3'59.177P	217,3	11:26'40.704
12	42.033	23.744	27.752	23.152	1'56.681P	215,6	11:28'37.385
13	26.146	22.775	26.638	21.479	1'37.038	216,9	11:30'14.423
14	25.563	22.654	26.539	21.209	1'35.965	217,3	11:31'50.388
15	25.258	22.436	26.468	21.483	1'35.645	217,3	11:33'26.033
16	25.039	22.430	26.559	21.181	1'35.209	217,7	11:35'01.242
17	25.277	24.008	26.568	21.324	1'37.177	218,2	11:36'38.419
18	25.863	22.613	26.548	22.151	1'37.175	219,5	11:38'15.594
19	26.038	22.500	26.408	22.556	1'37.502	217,7	11:39'53.096
20	24.980	22.365	26.324	21.142	1'34.811	217,3	11:41'27.907
21	24.961	22.475	26.257	21.170	1'34.863	218,2	11:43'02.770
22	25.319	22.893	26.430	21.344	1'35.986	219,5	11:44'38.756
23	25.102	22.212	27.565	21.161	1'36.040	218,6	11:46'14.796
24	25.223	22.474	26.315	21.299	1'35.311	218,2	11:47'50.107
25	25.162	22.323	26.222	21.159	1'34.866	219,1	11:49'24.973
26	25.468	22.308	26.346	21.169	1'35.291	218,6	11:51'00.264

207 Nova Race (1'43.648)

Giro	Seg.1	Seg.2	Seg.3	Seg.4	T. Giro	km/h	Local Time
1		27.371	31.708	24.310		192,5	11:08'23.053
2	27.784	25.511	29.543	24.293	1'47.131	193,5	11:10'10.184
3	27.498	24.856	29.204	23.167	1'44.725	194,6	11:11'54.909

215 Ceccato Racing (1'44.052)

Giro	Seg.1	Seg.2	Seg.3	Seg.4	T. Giro	km/h	Local Time
1		29.280	32.385	25.476		195,3	11:07'23.699
2	29.136	26.252	31.382	25.788	1'52.558	197,1	11:09'16.257
3	28.239	26.243	29.613	23.902	1'47.997	197,1	11:11'04.254
4	29.662	25.989	29.212	35.571	2'00.434P	197,8	11:13'04.688
5	1'42.545	25.348	29.288	24.316	3'01.497P	199,3	11:16'06.185
6	27.664	24.748	29.007	23.175	1'44.594	199,3	11:17'50.779
7	28.495	27.599	29.234	25.087	1'50.415	199,6	11:19'41.194
8	27.347	24.760	29.008	23.531	1'44.646	199,3	11:21'25.840
9	32.732	25.925	30.883	25.396	1'54.936	199,3	11:23'20.776
10	28.290	25.564	28.933	23.796	1'46.583	199,6	11:25'07.359
11	27.629	24.674	29.206	34.670	1'56.179P	199,3	11:27'03.538
12	2'20.123	26.372	29.087	23.688	3'39.270P	198,5	11:30'42.808
13	28.178	24.911	28.703	23.500	1'45.292	199,3	11:32'28.100
14	27.344	24.778	28.671	24.583	1'45.376	200,0	11:34'13.476
15	27.436	24.505	28.845	23.420	1'44.206	200,0	11:35'57.682
16	27.407	24.558	28.798	23.427	1'44.190	200,4	11:37'41.872
17	29.063	26.410	31.109	36.859	2'03.441P	198,9	11:39'45.313
18	2'09.853	25.979	28.719	23.140	3'27.691P	199,3	11:43'13.004
19	27.588	24.604	28.678	23.295	1'44.165	199,6	11:44'57.169
20	27.907	25.106	28.990	23.163	1'45.166	200,4	11:46'42.335
21	27.667	24.491	28.904	24.319	1'45.381	200,4	11:48'27.716
22	27.382	24.565	28.698	23.407	1'44.052	199,6	11:50'11.768

223 Autorlando Sport (1'45.998)

Giro	Seg.1	Seg.2	Seg.3	Seg.4	T. Giro	km/h	Local Time
1		30.956	34.731	27.082		139,9	11:08'46.998
2	31.169	29.317	34.427	24.780	1'59.693	151,9	11:10'46.691
3	32.869	30.920	30.869	25.972	2'00.630	190,1	11:12'47.321
4	28.608	26.219	30.781	25.476	1'51.084	193,2	11:14'38.405
5	28.967	26.564	30.127	2'27.716	3'53.374P	195,3	11:18'31.779
6	47.443	28.241	31.139	24.718	2'11.541P	189,1	11:20'43.320
7	27.906	25.509	29.507	24.096	1'47.018	197,8	11:22'30.338
8	27.519	25.343	29.153	23.983	1'45.998	197,1	11:24'16.336
9	27.967	25.395	29.509	26.039	1'48.910	196,7	11:26'05.246
10	27.828	25.228	29.286	24.235	1'46.577	198,9	11:27'51.823
11	28.023	25.435	30.033	3'32.720	4'56.211P	197,4	11:32'48.034
12	47.454	26.765	41.944	27.253	2'23.416P	196,4	11:35'11.450
13	28.472	26.024	29.910	25.892	1'50.298	194,9	11:37'01.748
14	30.062	26.031	30.629	24.458	1'51.180	194,9	11:38'52.928
15	28.659	25.428	31.627	25.734	1'51.448	195,7	11:40'44.376
16	29.632	26.149	29.770	23.864	1'49.415	195,3	11:42'33.791
17	28.184	25.291	29.511	23.800	1'46.786	195,7	11:44'20.577

04/06/2021

P = Box In/Out - C = Tempo Invalidato



ACI Racing Weekend Misano, 5-6 Giugno 2021

Campionato Italiano GT Sprint - Analisi Tempi Prove Libere 1

Misano Circuit Sic 58.4.226 m

5 / 7

18	28.478	25.543	29.652	24.000	1'47.673	195,3	11:46'08.250
19	28.094	25.174	29.635	23.814	1'46.717	197,4	11:47'54.967
20	28.373	25.477	29.613	23.807	1'47.270	195,7	11:49'42.237
21	28.104	25.553	29.754	23.770	1'47.181	198,2	11:51'29.418

11	27.473	24.817	30.086	23.394	1'45.770	200,4	11:35'40.740
12	27.674	25.092	28.987	23.530	1'45.283	199,6	11:37'26.023
13	27.385	24.704	28.910	23.334	1'44.333	201,5	11:39'10.356
14	27.556	24.566	29.594	23.515	1'45.231	197,1	11:40'55.587
15	27.389	24.748	29.132	33.796	1'55.065P	199,3	11:42'50.652
16	2'33.154	31.286	35.072	24.035	4'03.547P	155,0	11:46'54.199
17	28.162	26.261	30.289	27.765	1'52.477	196,0	11:48'46.676
18	28.011	25.072	29.366	24.392	1'46.841	198,5	11:50'33.517

228 Nova Race (1'44.929)

Giro	Seg.1	Seg.2	Seg.3	Seg.4	T. Giro	km/h	Local Time
1		26.230	30.790	24.534		192,5	11:08'08.206
2	28.016	25.233	30.004	24.680	1'47.933	194,2	11:09'56.139
3	28.780	25.060	29.647	25.193	1'48.680	194,6	11:11'44.819
4	27.780	24.572	29.377	23.756	1'45.485	195,7	11:13'30.304
5	27.971	25.121	30.793	23.924	1'47.809	195,7	11:15'18.113
6	27.858	24.918	29.712	23.212	1'45.700	196,0	11:17'03.813
7	27.498	24.582	29.269	23.580	1'44.929	196,4	11:18'48.742
8	30.142	26.923	31.902	50.913	2'19.880P	196,0	11:21'08.622
9	2'52.819	26.868	33.143	26.900	4'19.730P	195,3	11:25'28.352
10	29.492	25.697	30.856	25.541	1'51.586	197,8	11:27'19.938
11	28.309	26.190	30.652	24.700	1'49.851	197,1	11:29'09.789
12	28.336	25.354	30.419	25.079	1'49.188	196,4	11:30'58.977
13	27.762	26.213	30.550	24.405	1'48.930	196,7	11:32'47.907
14	28.334	25.312	30.134	24.594	1'48.374	196,4	11:34'36.281
15	30.345	25.777	30.076	24.475	1'50.673	197,1	11:36'26.954
16	28.257	25.640	30.150	27.605	1'51.652	197,1	11:38'18.606
17	28.419	25.832	32.622	49.165	2'16.038P	197,1	11:40'34.644
18	3'08.553	25.537	30.302	25.847	4'30.239P	196,4	11:45'04.883
19	28.403	25.214	29.713	24.609	1'47.939	197,1	11:46'52.822
20	27.895	24.973	30.230	24.443	1'47.541	196,7	11:48'40.363
21	28.660	25.683	30.581	24.449	1'49.373	197,8	11:50'29.736

275 Autorlando Sport (1'45.129)

Giro	Seg.1	Seg.2	Seg.3	Seg.4	T. Giro	km/h	Local Time
1		28.543	32.091	25.886		188,8	11:07'52.662
2	30.229	27.576	33.771	26.091	1'57.667	192,5	11:09'50.329
3	30.534	26.539	30.861	25.276	1'53.210	196,7	11:11'43.539
4	30.669	25.402	29.357	23.915	1'49.343	198,2	11:13'32.882
5	27.960	25.510	29.518	24.446	1'47.434	197,4	11:15'20.316
6	29.407	25.901	32.542	3'34.832	5'02.682P	182,7	11:20'22.998
7	46.087	26.726	31.210	23.653	2'07.676P	193,9	11:22'30.674
8	27.744	25.205	29.588	24.223	1'46.760	198,5	11:24'17.434
9	27.766	25.197	29.334	24.247	1'46.544	199,3	11:26'03.978
10	27.900	25.083	29.435	24.264	1'46.682	197,8	11:27'50.660
11	27.608	25.011	29.106	23.404	1'45.129	198,5	11:29'35.789
12	27.639	25.621	29.050	23.326	1'45.636	197,4	11:31'21.425
13	27.422	25.209	29.044	23.729	1'45.404	198,5	11:33'06.829
14	29.190	26.721	32.140	2'09.266	3'37.317P	173,4	11:36'44.146
15	48.779	26.184	30.389	24.668	2'10.020P	198,9	11:38'54.166
16	30.138	26.179	30.375	24.680	1'51.372	197,8	11:40'45.538
17	28.841	26.118	30.287	24.261	1'49.507	199,3	11:42'35.045
18	28.033	25.674	29.566	23.668	1'46.941	198,5	11:44'21.986
19	28.205	25.689	29.656	24.309	1'47.859	198,5	11:46'09.845
20	28.317	25.081	29.659	23.941	1'46.998	200,0	11:47'56.843
21	28.408	25.589	29.433	25.199	1'48.629	198,5	11:49'45.472
22	29.176	25.578	29.584	24.755	1'49.093	198,5	11:51'34.565

251 Ebimotors (1'43.751)

Giro	Seg.1	Seg.2	Seg.3	Seg.4	T. Giro	km/h	Local Time
1		33.121	38.298	29.924		126,6	11:09'12.712
2	30.564	28.093	32.481	25.145	1'56.283	134,0	11:11'08.995
3	31.744	30.746	38.333	25.566	2'06.389	148,4	11:13'15.384
4	28.240	24.796	28.997	23.606	1'45.639	201,1	11:15'01.023
5	27.514	24.611	28.934	23.456	1'44.515	201,5	11:16'45.538
6	27.518	24.677	28.966	24.087	1'45.248	200,4	11:18'30.786
7	30.733	30.983	38.292	36.630	2'16.638P	148,4	11:20'47.424
8	6'47.659	26.423	30.348	23.598	8'08.028P	196,7	11:28'55.452
9	27.446	24.621	30.010	23.376	1'45.453	199,3	11:30'40.905
10	28.287	24.871	28.977	23.532	1'45.667	200,0	11:32'26.572
11	27.225	24.428	29.181	24.137	1'44.971	200,0	11:34'11.543
12	28.739	24.330	28.924	23.198	1'45.191	201,1	11:35'56.734
13	27.582	24.311	28.942	23.161	1'43.996	200,7	11:37'40.730
14	27.288	24.437	28.976	23.050	1'43.751	200,7	11:39'24.481
15	27.340	24.549	36.618	34.041	2'02.548P	166,4	11:41'27.029
16	1'53.654	25.036	29.283	23.999	3'11.972P	199,6	11:44'39.001
17	27.186	24.586	29.188	23.234	1'44.194	200,4	11:46'23.195
18	27.255	24.385	28.875	26.439	1'46.954	200,0	11:48'10.149
19	28.515	25.385	29.362	34.128	1'57.390P	199,3	11:50'07.539

252 Ebimotors (1'44.333)

Giro	Seg.1	Seg.2	Seg.3	Seg.4	T. Giro	km/h	Local Time
1		29.979	35.252	25.967		173,1	11:09'18.927
2	29.506	28.647	35.612	24.526	1'58.291	161,4	11:11'17.218
3	29.316	30.032	34.822	43.323	2'17.493P	178,8	11:13'34.711
4	6'22.286	26.036	29.575	23.191	7'41.088P	198,5	11:21'15.799
5	27.380	24.494	30.145	24.058	1'46.077	198,5	11:23'01.876
6	28.442	24.839	29.922	23.316	1'46.519	198,5	11:24'48.395
7	27.375	25.234	29.292	23.474	1'45.375	199,3	11:26'33.770
8	27.414	24.763	29.228	23.258	1'44.663	199,6	11:28'18.433
9	29.484	26.357	29.391	32.836	1'58.068P	200,0	11:30'16.501
10	2'19.640	26.216	29.383	23.230	3'38.469P	199,3	11:33'54.970

318 Best Lap (1'39.339)

Giro	Seg.1	Seg.2	Seg.3	Seg.4	T. Giro	km/h	Local Time
1		26.665	31.864	25.566		209,7	11:07'22.036
2	28.830	24.501	28.775	24.066	1'46.172	220,4	11:09'08.208
3	27.393	23.478	27.488	22.728	1'41.087	220,0	11:10'49.295
4	27.479	24.228	27.956	24.953	1'44.616	220,4	11:12'33.911
5	26.767	23.421	27.359	22.630	1'40.177	218,2	11:14'14.088
6	27.610	24.070	29.913	23.473	1'45.066	197,8	11:15'59.154
7	26.834	23.285	27.356	22.400	1'39.875	219,5	11:17'39.029
8	26.591	23.155	27.419	22.606	1'39.771	219,1	11:19'18.800
9	26.447	23.157	27.196	22.539	1'39.339	219,5	11:20'58.139
10	26.774	23.424	28.229	23.662	1'42.089	219,1	11:22'40.228
11	26.569	24.497	31.903	3'14.901	4'37.870P	204,2	11:27'18.098
12	49.090	26.057	32.445	24.333	2'11.925P	215,1	11:29'30.023
13	28.377	24.519	29.342	23.538	1'45.776	217,7	11:31'15.799
14	28.716	24.934	29.823	23.294	1'46.767	218,2	11:33'02.566
15	27.993	24.844	28.172	22.989	1'43.998	216,0	11:34'46.564
16	27.928	24.048	28.337	23.190	1'43.503	220,0	11:36'30.067
17	27.947	24.696	28.558	23.025	1'44.226	215,6	11:38'14.293
18	28.465	23.787	28.871	25.244	1'46.367	219,5	11:40'00.660
19	28.861	24.696	28.903	23.490	1'45.950	216,4	11:41'46.610
20	27.645	24.697	27.783	22.658	1'42.783	221,3	11:43'29.393
21	27.001	24.046	28.897	22.858	1'42.802	220,9	11:45'12.195
22	27.042	24.239	28.059	22.930	1'42.270	221,3	11:46'54.465
23	28.874	24.239	28.880	23.612	1'45.605	215,6	11:48'40.070
24	27.370	24.096	27.995	23.136	1'42.597	221,8	11:50'22.667

322 Krypton Motorsport (1'37.387)

Giro	Seg.1	Seg.2	Seg.3	Seg.4	T. Giro	km/h	Local Time
------	-------	-------	-------	-------	---------	------	------------

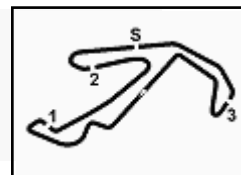
04/06/2021

P = Box In/Out - C = Tempo Invalidato



Powered by FICr PERUGIA TIMING





ACI Racing Weekend Misano, 5-6 Giugno 2021

Campionato Italiano GT Sprint - Analisi Tempi Prove Libere 1

Misano Circuit Sic 58.4.226 m

6 / 7

1	26.627	30.222	23.660	216,4	11:08'24.923
2	26.900	23.242	27.613	218,6	11:10'04.516
3	26.067	22.847	27.162	220,0	11:11'42.963
4	27.138	23.078	27.138	219,5	11:13'22.270
5	26.121	22.949	27.290	218,6	11:15'00.688
6	26.827	23.045	27.313	220,0	11:17'35.357
7	45.758	24.917	27.317	220,4	11:19'35.174
8	25.832	23.213	26.933	220,4	11:21'12.891
9	25.661	23.084	26.942	220,0	11:22'50.278
10	26.397	23.416	27.919	220,4	11:26'34.384
11	45.570	25.554	31.486	194,6	11:28'39.760
12	27.368	23.986	28.918	217,7	11:30'23.064
13	27.505	24.574	27.862	219,5	11:32'05.561
14	26.651	24.474	27.686	220,4	11:33'47.638
15	26.454	23.268	27.461	220,4	11:35'27.267
16	26.618	23.490	27.563	220,9	11:37'07.317
17	26.616	23.467	27.502	220,9	11:38'47.428
18	26.710	23.775	28.015	218,6	11:41'37.567
19	43.663	23.853	28.608	219,5	11:43'35.978
20	26.674	23.491	28.293	214,7	11:45'16.624
21	26.193	23.280	27.264	220,9	11:46'55.395
22	27.578	23.778	28.327	219,5	11:48'37.469
23	26.206	23.133	27.696	219,5	11:50'16.733

333 SR&R (1'39.073)

Giro	Seg.1	Seg.2	Seg.3	Seg.4	T. Giro	km/h	Local Time
1		25.803	29.528	35.715		215,1	11:10'31.011
2	1'55.074	23.820	28.446	22.931	3'10.271P	216,4	11:13'41.282
3	28.107	23.266	27.583	22.101	1'41.057	213,4	11:15'22.339
4	26.514	23.400	27.713	22.034	1'39.661	215,6	11:17'02.000
5	26.393	23.238	27.333	22.109	1'39.073	213,0	11:18'41.073
6	28.186	24.778	30.906	36.317	2'00.187P	197,8	11:20'41.260
7	5'06.360	24.640	29.703	24.629	6'25.332P	214,7	11:27'06.592
8	28.172	24.187	28.162	36.639	1'57.160P	214,3	11:29'03.752
9	1'56.262	23.834	29.128	22.630	3'11.854P	194,2	11:32'15.606
10	26.742	23.697	28.312	22.438	1'41.189	214,7	11:33'56.795
11	26.666	23.768	27.756	22.336	1'40.526	213,9	11:35'37.321
12	26.601	23.429	27.568	22.410	1'40.008	213,9	11:37'17.329
13	26.348	23.554	27.359	22.382	1'39.643	214,7	11:38'56.972
14	27.667	24.003	28.456	37.296	1'57.422P	213,4	11:40'54.394
15	6'36.745	25.069	28.177	22.656	7'52.647P	214,3	11:48'47.041
16	26.572	23.618	27.978	22.621	1'40.789	216,0	11:50'27.830

351 Bonaldi Motorsport (1'36.428)

Giro	Seg.1	Seg.2	Seg.3	Seg.4	T. Giro	km/h	Local Time
1		24.873	29.552	22.786		215,6	11:08'43.224
2	25.891	22.859	27.546	21.811	1'38.107	218,2	11:10'21.331
3	25.481	22.913	26.874	22.016	1'37.284	218,6	11:11'58.615
4	25.495	22.718	26.716	21.499	1'36.428	219,1	11:13'35.043
5	26.164	23.705	28.878	35.218	1'53.965P	220,0	11:15'29.008
6	4'28.266	28.023	33.030	26.737	5'56.056P	213,4	11:21'25.064
7	33.010	25.699	31.012	25.428	1'55.149	215,1	11:23'20.213
8	33.420	28.089	38.563	44.101	2'24.173P	194,9	11:25'44.386
9	3'25.068	26.821	34.702	27.637	4'54.228P	199,3	11:30'38.614
10	33.377	25.971	32.468	27.214	1'59.030	213,9	11:32'37.644
11	29.349	25.324	31.169	24.472	1'50.314	210,5	11:34'27.958
12	28.531	24.826	30.297	24.040	1'47.694	215,1	11:36'15.652
13	28.164	24.777	32.288	24.872	1'50.101	203,4	11:38'05.753
14	28.034	25.109	30.439	2'52.943	4'16.525P	213,9	11:42'22.278
15	3'41.456	26.325	32.288	26.389	5'06.458P	213,9	11:47'28.736
16	29.525	25.513	32.571	24.961	1'52.570	203,0	11:49'21.306
17	31.314	25.879	32.295	25.706	1'55.194	213,4	11:51'16.500

355 Easy Race (1'37.907)

Giro	Seg.1	Seg.2	Seg.3	Seg.4	T. Giro	km/h	Local Time
1							11:07'40.523
2	46.552	25.780	30.731	23.312	2'06.375P	210,5	11:09'46.898
3	26.617	23.565	27.567	22.467	1'40.216	219,1	11:11'27.114
4	26.082	23.793	27.863	2'38.664	3'56.402P	216,9	11:15'23.516
5	42.592	24.048	27.323	24.109	1'58.072P	217,7	11:17'21.588
6	26.060	23.085	27.011	21.821	1'37.977	219,1	11:18'59.565
7	25.795	23.627	27.896	21.930	1'39.248	219,5	11:20'38.813
8	25.790	23.167	27.081	21.869	1'37.907	218,2	11:22'16.720
9	25.879	23.111	26.958	22.338	1'38.286	218,6	11:23'55.006
10	26.748	23.341	27.380	22.203	1'39.672	219,1	11:25'34.678
11	26.161	23.174	27.318	21.773	1'38.426	218,6	11:27'13.104
12	25.998	23.339	27.431	2'22.435	3'39.203P	219,5	11:30'52.307
13	50.787	25.981	30.755	24.705	2'12.228P	216,9	11:33'04.535
14	27.393	24.238	28.321	23.078	1'43.030	218,6	11:34'47.565
15	27.369	24.159	31.942	24.324	1'47.794	176,5	11:36'35.359
16	26.962	23.484	27.388	23.696	1'41.530	218,6	11:38'16.889
17	27.109	23.489	28.613	23.659	1'42.870	219,1	11:39'59.759
18	26.394	23.694	27.459	22.500	1'40.047	219,1	11:41'39.806
19	25.983	23.983	27.444	22.793	1'40.203	217,7	11:43'20.009
20	26.379	24.132	28.585	24.064	1'43.160	217,3	11:45'03.169
21	26.419	24.267	26.950	22.433	1'40.069	220,4	11:46'43.238
22	26.294	24.074	26.980	22.102	1'39.450	216,4	11:48'22.688
23	26.427	24.285	28.081	22.620	1'41.413	221,3	11:50'04.101

369 Krypton Motorsport

Giro	Seg.1	Seg.2	Seg.3	Seg.4	T. Giro	km/h	Local Time
1							11:04'59.426

377 Rexal FFF Racing Team (1'41.630)

Giro	Seg.1	Seg.2	Seg.3	Seg.4	T. Giro	km/h	Local Time
1		26.071	30.263	23.343		210,9	11:10'14.927
2	28.067	24.095	29.036	25.059	1'46.257	213,0	11:12'01.184
3	30.336	24.108	28.509	23.372	1'46.325	214,7	11:13'47.509
4	40.087	24.885	29.398	24.175	1'58.545	207,3	11:15'46.054
5	28.427	26.576	28.192	23.086	1'46.281	214,7	11:17'32.335
6	27.210	23.696	28.014	22.710	1'41.630	216,4	11:19'13.965
7	27.186	23.569	28.106	24.210	1'43.071	216,4	11:20'57.036
8	26.973	24.027	30.866	26.767	1'48.633	214,3	11:22'45.669
9	27.308	23.799	28.385	24.488	1'43.980	216,0	11:24'29.649
10	26.907	24.156	29.796	25.099	1'45.958	216,0	11:26'15.607
11	27.532	26.027	29.073	36.657	1'59.289P	212,6	11:28'14.896
12	4'16.879	28.449	36.253	27.905	5'49.486P	208,9	11:34'04.382
13	27.408	26.764	29.021	23.795	1'46.988	209,7	11:35'51.370
14	27.510	24.051	27.935	22.876	1'42.372	214,7	11:37'33.742
15	27.692	24.116	28.721	22.932	1'43.461	216,0	11:39'17.203
16	27.015	23.629	29.112	23.934	1'43.690	214,7	11:41'00.893
17	29.806	24.713	28.493	23.861	1'46.873	213,9	11:42'47.766
18	28.109	23.892	28.411	24.774	1'45.186	214,7	11:44'32.952
19	26.881	24.341	30.375	24.077	1'45.674	216,9	11:46'18.626
20	27.248	25.694	27.968	23.175	1'44.085	213,4	11:48'02.711

381 Tsunami R.T. (1'38.639)

Giro	Seg.1	Seg.2	Seg.3	Seg.4	T. Giro	km/h	Local Time
1							11:06'01.953
2	1'55.715	33.153	39.341	25.549	3'33.758P	105,2	11:09'35.711
3	30.275	25.877	29.515	22.684	1'48.351	214,3	11:11'24.062
4	26.903	24.051	27.999	22.467	1'41.420	216,0	11:13'05.482
5	26.755	24.074	27.677	22.999	1'41.505	218,2	11:14'46.987
6	26.347	23.230	27.993	23.636	1'41.206	217,3	11:16'28.193
7	26.790	24.297	28.507	3'32.135	4'51.729P	219,1	11:21'19.922
8	47.119	23.891	27.699	22.299	2'01.008P	217,3	11:23'20.930

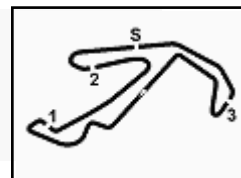
04/06/2021

P = Box In/Out - C = Tempo Invalidato



Powered by FICr PERUGIA TIMING





Misano Circuit Sic 58 4.226 m

7 / 7

ACI Racing Weekend Misano, 5-6 Giugno 2021

Campionato Italiano GT Sprint - Analisi Tempi Prove Libere 1

9	26.656	23.220	28.215	22.172	1'40.263	215,6	11:25'01.193
10	26.345	23.223	27.816	22.236	1'39.620	218,2	11:26'40.813
11	26.212	23.158	27.695	22.269	1'39.334	216,9	11:28'20.147
12	26.693	23.497	28.075	24.044	1'42.309	218,2	11:30'02.456
13	26.670	25.905	28.481	23.154	1'44.210	218,2	11:31'46.666
14	26.695	23.429	29.157	22.663	1'41.944	188,5	11:33'28.610
15	27.402	23.301	27.513	23.014	1'41.230	218,2	11:35'09.840
16	26.431	23.691	27.785	22.334	1'40.241	216,4	11:36'50.081
17	26.631	23.257	27.502	22.301	1'39.691	217,7	11:38'29.772
18	26.584	23.167	28.045	4'56.763	6'14.559P	217,7	11:44'44.331
19	50.051	29.963	36.009	28.575	2'24.598P	112,4	11:47'08.929
20	26.041	22.964	27.319	22.315	1'38.639	217,3	11:48'47.568
21	26.706	23.714	28.076	23.351	1'41.847	218,6	11:50'29.415

391 Best Lap (1'37.039)

Giro	Seg.1	Seg.2	Seg.3	Seg.4	T. Giro	km/h	Local Time
1							11:05'04.909
2	2'38.183	26.360	29.304	23.058	3'56.905P	215,6	11:09'01.814
3	26.565	23.534	28.627	22.228	1'40.954	216,9	11:10'42.768
4	26.304	23.162	27.262	22.024	1'38.752	219,1	11:12'21.520
5	26.043	22.963	27.469	22.018	1'38.493	217,7	11:14'00.013
6	28.978	25.224	31.411	22.413	1'48.026	142,9	11:15'48.039
7	26.848	24.079	28.284	22.418	1'41.629	214,7	11:17'29.668
8	25.982	22.966	27.319	21.863	1'38.130	220,0	11:19'07.798
9	25.811	26.044	29.453	22.710	1'44.018	216,9	11:20'51.816
10	26.411	23.070	27.355	27.168	1'44.004	218,2	11:22'35.820
11	26.103	23.151	28.507	31.668	1'49.429	218,2	11:24'25.249
12	26.761	23.381	29.654	2'37.756	3'57.552P	177,6	11:28'22.801
13	49.372	24.683	28.758	22.486	2'05.299P	214,3	11:30'28.100
14	26.325	22.870	27.056	23.291	1'39.542	217,3	11:32'07.642
15	26.769	23.461	27.034	22.499	1'39.763	218,6	11:33'47.405
16	26.066	22.772	26.839	21.947	1'37.624	218,2	11:35'25.029
17	25.960	22.791	26.926	22.379	1'38.056	219,1	11:37'03.085
18	27.143	22.901	27.250	21.973	1'39.267	217,7	11:38'42.352
19	26.219	22.689	26.945	1'53.948	3'09.801P	218,2	11:41'52.153
20	42.916	23.529	26.842	21.810	1'55.097P	217,3	11:43'47.250
21	25.951	22.754	26.711	21.623	1'37.039	217,7	11:45'24.289
22	26.327	22.865	29.776	23.206	1'42.174	177,3	11:47'06.463
23	27.006	23.539	30.479	25.365	1'46.389	216,0	11:48'52.852
24	26.074	22.738	27.006	22.230	1'38.048	219,1	11:50'30.900

399 Dionisio Ermanno (1'40.285)

Giro	Seg.1	Seg.2	Seg.3	Seg.4	T. Giro	km/h	Local Time
1		28.518	32.754	24.422		190,5	11:08'24.852
2	29.252	25.791	30.085	23.863	1'48.991	188,2	11:10'13.843
3	27.480	24.234	30.087	25.793	1'47.594	213,9	11:12'01.437
4	28.463	24.279	29.113	25.330	1'47.185	213,9	11:13'48.622
5	29.903	24.446	30.139	38.880	2'03.368P	214,3	11:15'51.990
6	11'25.141	26.326	28.851	23.451	12'43.769P	211,4	11:28'35.759
7	28.571	25.149	29.397	23.578	1'46.695	213,0	11:30'22.454
8	26.605	23.848	28.024	26.669	1'45.146	215,1	11:32'07.600
9	27.997	23.864	27.513	23.665	1'43.039	215,6	11:33'50.639
10	27.799	23.435	27.723	22.647	1'41.604	214,7	11:35'32.243
11	26.885	23.601	28.103	22.571	1'41.160	215,6	11:37'13.403
12	27.223	23.342	27.825	22.862	1'41.252	215,1	11:38'54.655
13	28.402	24.995	28.576	34.286	1'56.259P	215,1	11:40'50.914
14	2'35.270	25.814	29.292	23.153	3'53.529P	215,1	11:44'44.443
15	26.978	23.424	27.698	22.322	1'40.422	217,3	11:46'24.865
16	26.495	23.953	28.018	22.630	1'41.096	218,6	11:48'05.961
17	27.139	23.735	27.739	22.125	1'40.738	217,7	11:49'46.699
18	27.148	23.230	27.466	22.441	1'40.285	218,2	11:51'26.984

04/06/2021

P = Box In/Out - C = Tempo Invalidato



Automobile Club d'Italia

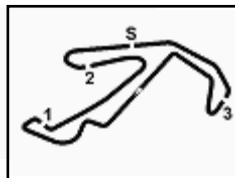


ACI Global Servizi



Powered by FICr PERUGIA TIMING





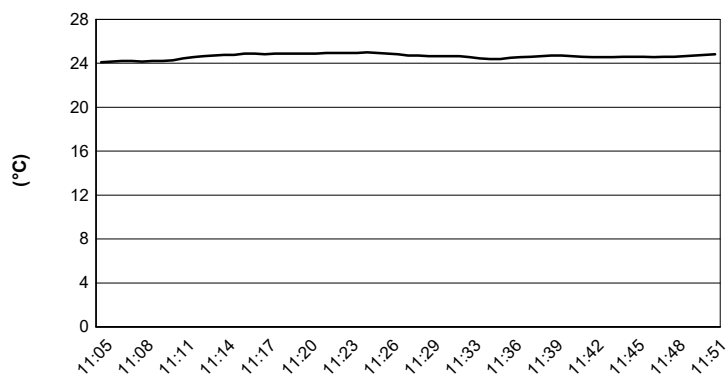
ACI Racing Weekend Misano, 5-6 Giugno 2021

Campionato Italiano GT Sprint - Meteo Prove Libere 1

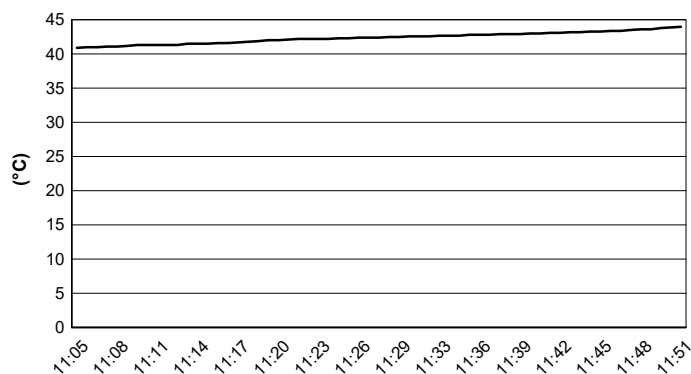
Session started 11:05 - Session ended 11:51

Misano Circuit Sic 58 4.226 m

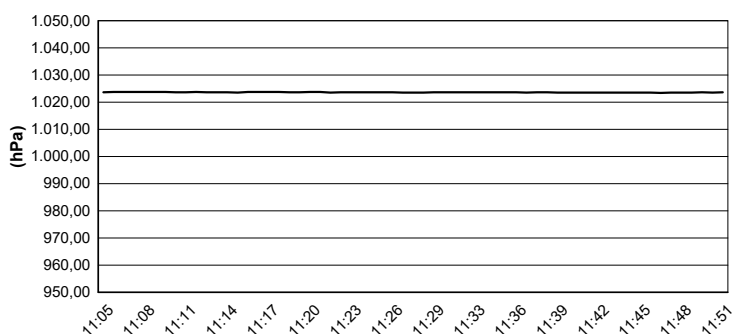
Air Temperature



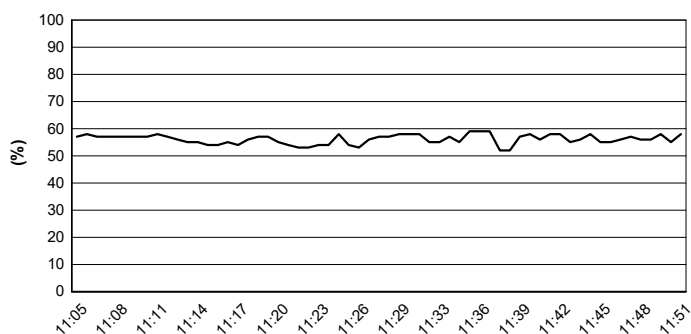
Track Temperature



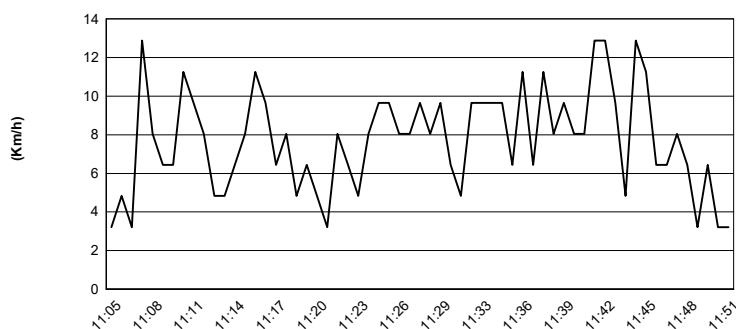
Air Pressure



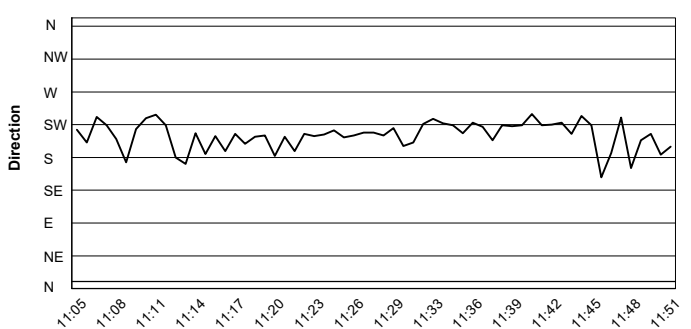
Humidity



Wind Speed



Wind Direction



04/06/2021

